



Fall Protection

# 3M™ DBI-SALA® 8 mm Permanent Horizontal Lifeline System.



# We've worked in your industry for decades.

Workers lives are on the line everyday, but ensuring their safety starts long before their job begins.

At 3M Fall Protection, we work hard to understand the challenges you face before we design your equipment. That's how we go beyond compliance to produce a broad and innovative range of high quality fall protection equipment for some of the world's most vital industries.

When working at height is unavoidable and other means of protection are not possible, many rely on horizontal fall arrest systems.

The 3M™ DBI-SALA® Permanent Horizontal Lifeline System can be used for either work restraint or fall arrest and is suitable for multiple applications. It allows users complete freedom of movement to carry out their work uninterrupted, in a continuous straight line and around corners, provided a suitable structure is available for connection of the lifeline.

## Contents.

Wall & floor applications	4 - 5
Overhead applications	6 - 7
New calculation software	8
Energy absorbers	9
Installation examples - wall & overhead	10
Component compatibility	11
System components	12 - 14
Recommended 3M™ products	15



## System features & benefits.

- The patented energy absorbing technology provides predictable linear, high capacity performance
- Free cloud based calculation software to support the system
- Tensioning tool offers a quick and easy way to tension DBI-SALA® 8 mm lifeline system
- Mounting bracket options allow easier navigation around corners and building contours
- Travellers incorporate large D-ring for easy connection
- Short wheelbase of the Overhead Traveller enables a smooth movement through corners
- 316 Stainless Steel components provide long-term corrosion resistance\*
- The system has been tested to:
  - EN 795:2012 Type C
  - CEN TS 16415:2013 Type C
  - and meets the requirements of OSHA 1926.502
- Each system allows up to a maximum of 4 users. All users are permitted to work within one span, if required, at any one time allowing a concentration of workforce in one specific area.



## Wall & floor applications.

- Ideally suited to modern building projects, refurbishments and industrial safety applications
- Can be fitted to steel beams, concrete and brickwork
- Suitable for use on older roof constructions in conjunction with fabricated anchor posts\*\*
- Allows up to 15 m spans between support brackets for multiple users.



# Overhead applications.

- Specifically designed to meet the needs of transport and industrial customers
- Enables safe work at height to be carried out on trucks, trains and aircraft, crane walkways and loading bays
- Solves access and safety problems within the entertainment and arena industry
- Can support Self-Retracting Lifelines and controlled rate descent devices up to 15 kg
- Allows up to 60 m single span for 1 user and up to 30 m single span for multiple users\*
- Corner brackets available for overhead applications.



# 3M™ DBI-SALA® installed systems calculation software.

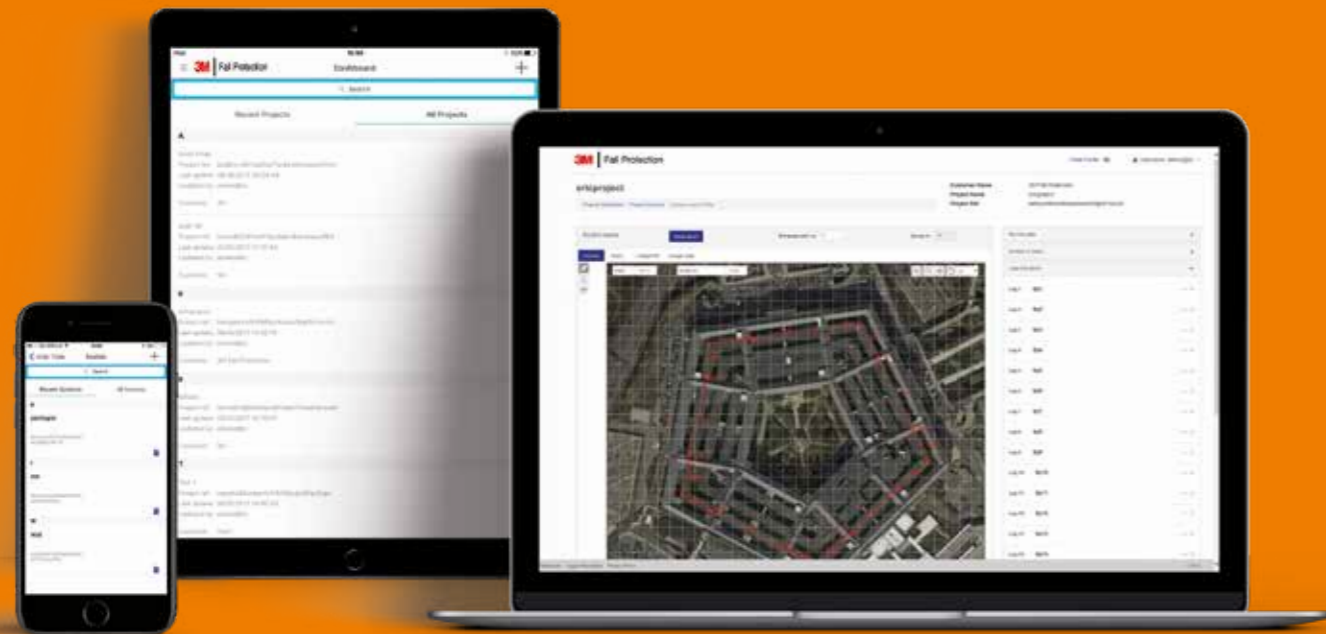
The 8 mm Permanent Horizontal Lifeline System is fully supported by our calculation software package which enables you to build and specify our system for projects, accurately calculate fall distances and produce a full technical report for your client.

It allows full accessibility from a desktop or tablet to help manage projects, effectively keeping all necessary information on one site.

A smart phone app is also available for windows, IOS and Android which allows a user to take

and add photos to a project, as well as view any existing project data already stored, even when on site.

Whilst designing your system the option of selecting Personal Protective Equipment and accessories to compliment the system, such as harnesses lanyards and SRLs is available and allows for a complete system calculation. A full bill of quantities for both the system and PPE is generated, once the calculation is complete, which can be used for ordering through our Customer Service Department.



## Key features

- NEW free cloud based software
- Available on multiple platforms
- User friendly layout
- Allows you to manage and track projects and installed systems
- Ability to add a pdf image or google map background when designing the system layout
- Can take and upload photos directly to a project
- A library of documents, such as technical datasheets, Instructions for Use and certificates are available to upload to your projects
- Creates a full technical report and system bill of quantities, inclusive of PPE where selected
- Access for an administrator and multiple users of the software per company.

# Energy absorbers.

- Options available to match the strength of the structure
- Integrated tensioner maintains the system tension through temperature fluctuations
- Incorporates an optimum tension indicator.



## Stage one.

An Overhead System as installed, at system tension.



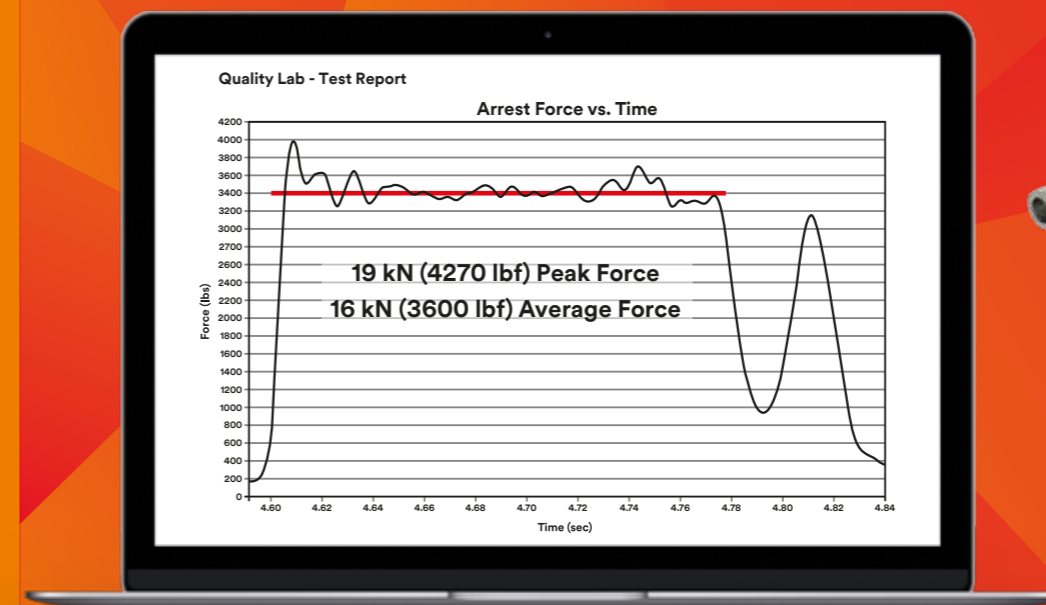
## Stage two.

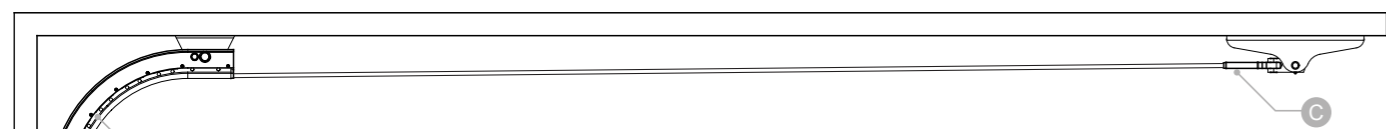
The energy absorber is activated by a fall.



## Stage three.

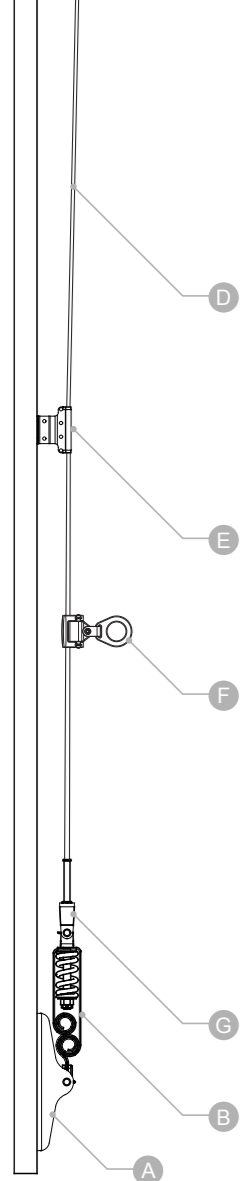
The energy absorber once it has completely arrested the fall of one user.





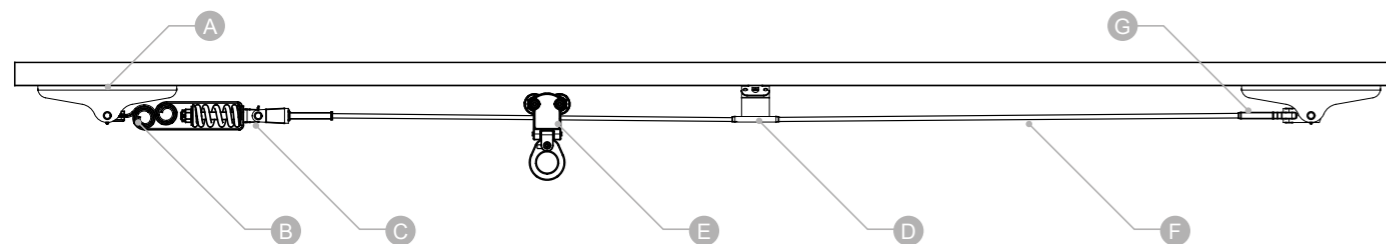
**Corner wall system.**

A	Multi fix anchor plate	7241417
B	19 kN peak force, 5 kN system tension energy absorber	7241425
C	Hex swage stud, pass through	7241430
D	8 mm 7 x 7 SS cable	7240211
E	8 mm intermediate bracket	7241412
F	8 mm Standard Traveller	7241420
G	Hex swage toggle	7234011
H	90 degree internal corner with strengthener	7241418



**Straight overhead system.**

A	Multi fix anchor plate	7241417
B	19 kN peak force, 5 kN system tension energy absorber	7241425
C	Hex swage stud, pass through	7241430
D	8 mm overhead bracket	7241414
E	Overhead Traveller	7241421
F	8 mm 1 x 19 stainless steel cable	7240212
G	Hex swage toggle	7234011



Wall/floor application	Overhead application
8 mm Detachable Traveller 7241420	8 mm Overhead Traveller 7241421

			Wall/floor application	Overhead application	
Intermediate brackets		8 mm intermediate bracket	7241412	✓	✓
		8 mm variable bracket	7241413	✓	✗
		8 mm overhead bracket	7241414	✗	✓
		8 mm 45 deg intermediate bracket	7241415	✓	✗
Energy absorbers		11 kN peak force, 0.8 kN system tension energy absorber	7241422	✓	✗
		19 kN peak force, 0.8 kN system tension energy absorber	7241424	✓	✗
		19 kN peak force, 5 kN system tension energy absorber	7241425	✗	✓
Corners		90 degree internal corner	7241406	✓	✓
		90 degree internal corner with strengthener	7241418	✗	✓
		90 degree post mount corner	7241408	✓	✗
		45 degree internal corner	7241409	✓	✓
End anchors		8 mm straight eye	7240122	✓	✓
		Multi fix anchor plate	7241417	✓	✓
Terminations		8 mm hex swage stud, pass through	7241430	✓	✓
		8 mm hex swage toggle	7234011	✓	✓

8 mm Overhead Traveller



	○	↔	📊
7241421	Ⓢ	22 kN	0.78

8 mm Standard Traveller



	○	↔	📊
7241420	Ⓢ	22 kN	1.20

19 kN Peak force, 0.8 kN System Tension Energy Absorber



	○	↔	📊
7241424	Ⓢ	38 kN	2.20

19 kN Peak force, 5 kN System Tension Energy Absorber



	○	↔	📊
7241425	Ⓢ	38 kN	2.50

8 mm Straight Eye



	○	↔	📊
7240122	Ⓢ	38 kN	0.35

Multi Fix Anchor Plate



	○	↔	📊
7241417	Ⓢ	38 kN	1.50

90 Degree Internal Corner



	○	↔	📊
7241406	Ⓢ	38 kN	1.80

90 Degree Internal Corner with Strengtheners



	○	↔	📊
7241418	Ⓢ	38 kN	3.30

8 mm Hex Swage Stud, Pass Through



	○	↔	📊
7241430	Ⓢ	38 kN	0.34

8 mm Hex Swage Toggle



	○	↔	📊
7234011	Ⓢ	38 kN	0.33

45 Degree Internal Corner



	○	↔	📊
7241409	Ⓢ	38 kN	1.60

90 Degree Post Mount Corner



	○	↔	📊
7241408	Ⓢ	22.2 kN	0.60

8 mm Intermediate Bracket



	○	←	kg
7241412	SS	24 kN	0.20

8 mm Variable Bracket



	○	←	kg
7241413	SS	24 kN	0.30

8 mm Overhead Bracket



	○	←	kg
7241414	SS	24 kN	0.28

Tensioning Tool



	○	←	kg
7241431	SS		3.80

8 mm Hex Swage Joiner



	○	←	kg
7234012	SS	38 kN	0.12

8 mm, 7 X 7 & 1 X 19 Stainless Steel Cable



	○	←	kg
7240211	SS	38.7 kN	0.24
7240212	SS	47 kN	0.31

# Recommended 3M™ Products.



3101430

3M™ DBI-SALA® Nano-Lok™ Edged Tested Self-Retracting Lifeline is designed for foot-level tie-off and sharp edge applications making it ideal for construction environments. This extremely compact, lightweight twin-leg design offers 100% tie off and a 2.4 m retractable web lifeline and an integrated backpack style energy absorber.

3101264

3M™ DBI-SALA® Nano-Lok Self-Retracting Lifeline is compact and ergonomically designed for ease-of-use and is ideal for direct connection to most harnesses. Compatible with shoulder and foot level connections and with the tension being kept on the lifeline, it helps reduce dragging, snagging and trip falls.



1112952

3M™ DBI-SALA® Delta™ Comfort Harness with Quick Connect Buckles features built-in shoulder, back and leg padding, coated, corrosion-resistant hardware, and abrasion-resistant webbing for longer product life. Revolver™ Torso Adjusters enable simple and fast adjustment without loose ends.



3504553

3M™ DBI-SALA® Ultra-Lok™ RSQ™ Self-Retracting Lifeline features dual mode for fall arrest and rescue, which makes it an ideal accessory for overhead applications. It also benefits from anchor swivel, lightweight thermoplastic housing and reserve lifeline.



**3M Belgium BVBA / SPRL**

Hermeslaan 7  
1831 Diegem  
België / Belgique  
E-mail: [3Msafety.be@mmm.com](mailto:3Msafety.be@mmm.com)  
[www.3Msafety.be](http://www.3Msafety.be)

**3M Danmark**

Hannemanns Allé 53  
2300 København S  
Danmark  
E-mail: [3Msikkerhed@mmm.com](mailto:3Msikkerhed@mmm.com)  
[www.3Msikkerhed.dk](http://www.3Msikkerhed.dk)

**3M Deutschland GmbH**

Carl-Schurz-Straße 1  
D - 41453 Neuss  
Deutschland  
E-mail: [arbeitsschutz.de@mmm.com](mailto:arbeitsschutz.de@mmm.com)  
[www.3Marbeitsschutz.de](http://www.3Marbeitsschutz.de)

**3M Espana, S.A.**

Juan Ignacio Luca de Tena, 19-25  
28027 Madrid  
Espana  
E-mail: [ohes.es@3M.com](mailto:ohes.es@3M.com)  
[www.3M.com/es/seguridad](http://www.3M.com/es/seguridad)

**3M France**

Boulevard de l'Oise  
95006 Cergy Pontoise Cedex  
France  
[www.3M.com/fr/securite](http://www.3M.com/fr/securite)

**3M Greece**

20 Kifissias Ave.  
151 25 Maroussi  
Athens, Greece  
[www.3M.com/gr/occsafety](http://www.3M.com/gr/occsafety)

**3M Ireland Limited**

The Iveagh Building  
The Park, Carrickmines  
Dublin 18  
Ireland  
E-mail: [ohes.helpline.uk@mmm.com](mailto:ohes.helpline.uk@mmm.com)  
[www.3M.co.uk/safety](http://www.3M.co.uk/safety)

**3M Italia srl**

Via Norberto Bobbio, 21  
20096 Pioltello MI  
Italia  
E-mail: [3Msicurezza@mmm.com](mailto:3Msicurezza@mmm.com)  
[www.3Msicurezza.it](http://www.3Msicurezza.it)

**3M Nederland B.V.**

Molengraaffsingel 29  
2629 JD Delft  
Nederland  
E-mail: [3Msafety.nl@mmm.com](mailto:3Msafety.nl@mmm.com)  
[www.3Msafety.nl](http://www.3Msafety.nl)

**3M Norge A/S**

Postboks 100, 2026 Skjetten  
Norge  
E-mail: [kundeservice@mmm.com](mailto:kundeservice@mmm.com)  
[www.3M.no/vern](http://www.3M.no/vern)

**3M Österreich GmbH**

Kranichberggasse 4  
1120 Wien  
Österreich  
[www.3M.com/at/arbeitsschutz](http://www.3M.com/at/arbeitsschutz)

**3M Portugal**

Rua do Conde Redondo, 98  
1169-009 Lisboa  
Portugal  
[www.3M.com/pt/seguranca](http://www.3M.com/pt/seguranca)

**3M Suisse S.a r.l. / Schweiz GmbH**

Eggstrasse 93  
8803 Rüsclikon  
Suisse / Schweiz  
[www.3M.com/ch/safety](http://www.3M.com/ch/safety)

**Suomen 3M Oy**

Keilaranta 6  
02150 Espoo  
Suomi  
[www.3M.fi/suojaimet](http://www.3M.fi/suojaimet)

**3M Svenska AB**

191 89 Sollentuna  
Sverige  
E-mail: [kundeservice@mmm.com](mailto:kundeservice@mmm.com)  
[www.3M.se/personskydd](http://www.3M.se/personskydd)

**3M United Kingdom PLC**

3M Centre  
Cain Road  
Bracknell  
RG12 8HT  
United Kingdom  
E-mail: [ohes.helpline.uk@mmm.com](mailto:ohes.helpline.uk@mmm.com)  
[www.3M.co.uk/safety](http://www.3M.co.uk/safety)

**3M Fall Protection Business**

**Capital Safety Group (NE) Ltd**  
5a Merse Road, North Moons Moat  
Redditch, B98 9HL, UK

**Capital Safety Group (EMEA)**  
Le Broc Center, Bâtiment A, Z.1. 1re Avenue – BP15  
06511 Carros Le Broc, Cedex, FRANCE

Phone 00 800 999 55500 Email [informationfallprotection@mmm.com](mailto:informationfallprotection@mmm.com) Web [3M.com/FallProtection](http://3M.com/FallProtection)

3M, DBI-SALA, Nano-Lok, Delta, Ultra-Lok belongs to 3M Company and its affiliates.

Registered address: 3M Centre, Cain Road, Bracknell, Berkshire, RG12 8HT. Registered in England and Wales No. 1918922.

Please recycle. Printed in the U.K.  
©3M 2017. All rights reserved.  
Ref: 9501629